

Promenade®

Sliding Patio Door Collection
—Contemporary, Classic, French—

Crafted for Beauty, Durability and Energy Efficiency



PROMENADE SLIDING PATIO DOORS

Enhance Your Home with a Beautiful View



A LEGACY OF EXCELLENCE

Selecting the right patio door for your home is easy when you have three superb styles to choose from: Contemporary, Classic and French. Each Promenade Sliding Patio Door is beautifully detailed to achieve a distinctive look while providing a powerful shield against inclement weather and energy loss.[†] Promenade also incorporates Alside's more than 75 years of manufacturing excellence, further assurance of lasting quality and value.

We also take special pride in producing Promenade Sliding Patio Doors at our U.S. operations. This not only champions the tradition of American ingenuity and craftsmanship, it also fortifies our nation with quality jobs and economic dollars.



Alside Promenade Sliding Patio Doors are manufactured with a heavy-duty mainframe and sash, multi-chambered extrusions and steel-reinforced interlocking meeting rails to ensure superior structural integrity and durability. Dual internal/external weatherstripping, compression bulb seal and a 1" thick (nominal) insulated glass unit with a warm-edge spacer system also contribute to thermal efficiency.

CLIMATECH® INSULATED GLASS . . . YOUR SOLUTION FOR INCREASED PERFORMANCE

Many people think of glass as being fragile, yet it's one of the primary components in the thermal efficiency of your patio door. Upgrading your door with a ClimaTech insulated glass package will further increase energy conservation. ClimaTech combines multi-layered, low-emissivity (Low-E) glass, argon gas^{††} and the Intercept® Warm-Edge Spacer System for improved energy efficiency compared to a standard clear glass unit.

Low-E glass features a virtually clear, metallic coating that makes your sliding patio doors more energy efficient by allowing them to transfer less heat.

- In winter months, Low-E insulating glass helps reduce heat loss by reflecting warmth back into your home.
- During the summer, Low-E helps block unwanted solar heat penetration to help conserve air-conditioning use.

Many ClimaTech insulated glass packages meet the latest ENERGY STAR®-certified requirements for energy-saving performance. Consult your window professional for an energy-efficient glass package for your home and climate zone.

GREEN INSPIRATION

Alside Windows and Patio Doors are expertly crafted to provide energy efficiency and help reduce the consumption of fossil fuels for heating and cooling homes. Using less energy to heat and cool your home not only saves money, it can reduce your home's carbon footprint as well. Vinyl's long lifespan and low maintenance nature can further lessen your impact on the environment as no painting, staining or other maintenance-related products are needed.



USGBC and related logo is a trademark owned by the U.S. Green Building Council.

CONTEMPORARY-STYLE SLIDING PATIO DOOR – 3" RAILS

Create a fresh and inviting entry to your home with our Promenade Contemporary-Style Sliding Patio Door. The sleek, clean-line design features symmetrical 3" rails for the perfect touch of modern sophistication.



CASUAL ELEGANCE WITH ARCHITECTURAL APPEAL

This superbly built door will infuse your home with the warmth and beauty of natural sunlight, while protecting it from harsh weather elements.

1. **Premium vinyl mainframe and sash extrusions** are colored throughout – won't chip, peel, crack or warp and never need to be painted.
2. **Mainframe and sash** feature a double-wall design and multi-chambered construction for outstanding strength and thermal protection.
3. **Dual internal/external weatherstripping** on the sash enhances energy efficiency and performance.
4. **Symmetrical 3" rails** with mitered and fusion-welded joints provide aesthetic appeal as well as added strength and durability.
5. **1" thick (nominal) insulated glass unit** with the Intercept Warm-Edge Spacer System promotes energy conservation year-round.
6. **Steel reinforcements** at the interlocks and lock rails increase strength, rigidity and structural integrity.
7. **Contoured glazing bead** adds visual interest and beauty.
8. **Precision-engineered tandem roller system** ensures quiet and easy operation of the door panel.
9. **Fusion-welded mainframe** provides increased durability and strength.

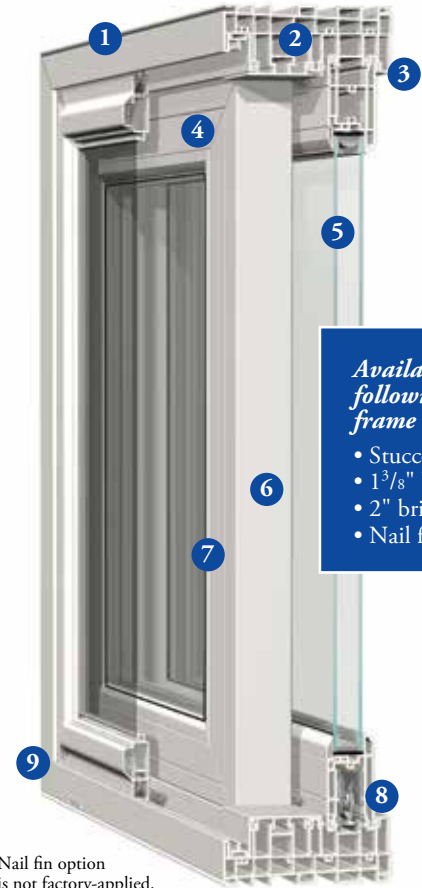
PLUS THESE ADDITIONAL FEATURES:

- Deep interlocks with a protective bulb weatherstrip deliver increased insulation and a tight seal.
- Mainframe includes interior and exterior accessory grooves for installation and design versatility.
- Multi-point locking system with strong steel bolt design seals the door tightly closed and helps prevent energy loss.
- Interlock incorporates a built-in, anti-lift feature to impede door panel removal when closed or locked.
- Deep anodize finished aluminum roller track helps eliminate the possibility of unsightly dark residue and wearing typical of aluminum tracks while ensuring easy-glide operation.
- Heavy-duty extruded aluminum screen features four adjustable rollers for smooth gliding.
- Available in a 2-panel style in 5', 6' and 8' widths; 3-panel styles in 9' and 12' widths; and a 4-panel style in a 12' width with center panels that open to each side.
- Choose a left or right moving panel – left moving panel is standard (outside looking in); not field reversible.
- Backed by a Lifetime Limited Warranty.[¥]

PATIO DOOR OPTIONS:

- ENERGY STAR-certified ClimaTech insulated glass packages.
- Tandem rollers available with stainless steel housing and bearings for harsh environments.
- Integrated mini blinds² on select patio doors offer convenient sunlight and privacy control.
- Interior ventilation foot lock allows convenient yet limited opening of the door for airflow.
- Keyed exterior lock offers convenient access from outside the home.
- Decorative grids for enhanced beauty.

²Optional integrated mini blinds will feature a white blind only.



Available with the following frame options:

- Stucco fin
- 1³/₈" brickmould¹
- 2" brickmould¹
- Nail fin¹

¹Nail fin option is not factory-applied.

Contemporary-Style Patio Door Glass Performance Comparison³

	U-Factor	SHGC
Clear	0.43	0.56
ClimaTech	0.27	0.31
ClimaTech Elite Plus	0.26	0.20
ClimaTech SF ThermD	0.22	0.29
ClimaTech SF Elite ThermD	0.22	0.20
ClimaTech TG2	0.20	0.26
ClimaTech PriME ThermD S6	0.18	0.21

³6506 whole door values, double strength glass.

Glass Package Terminology:

Clear Insulated: Clear double-pane insulated glass unit.

ClimaTech: Double-pane unit with one pane of Low-E glass, argon gas and metal alloy Intercept spacer.

ClimaTech Elite Plus: Double-pane unit with one pane of SHGC Low-E glass, argon gas and foam spacer.

ClimaTech SF ThermD: Double-pane unit with two surfaces of Low-E glass (surfaces 2 and 4), argon gas and Stainless Steel Intercept Warm-Edge Spacer System.

ClimaTech SF Elite ThermD: Double-pane unit with one surface of SHGC Low-E glass (surface 2), one surface of Low-E glass (surface 4), argon gas and Stainless Steel Intercept Warm-Edge Spacer System.

ClimaTech TG2: Triple-pane unit with two surfaces of Low-E glass, two air spaces of argon gas and Intercept Warm-Edge Spacer System.

ClimaTech PriME ThermD S6: Triple-pane unit with three surfaces of Low-E glass (surfaces 2, 4 and 6), two air spaces of argon gas and Stainless Steel Intercept Warm-Edge Spacer System.

CLASSIC-STYLE SLIDING PATIO DOOR – 5" RAILS

We've given our Promenade Classic-Style Sliding Patio Door an ample measure of traditional beauty but with a tough, high-endurance build. Generous 5" rails convey a familiar sense of home, while design innovations and easy-care features merge perfectly with today's carefree lifestyle.



TIME-HONORED BEAUTY WITH MODERN PRACTICALITY

Weather protection is just part of the story when it comes to this ultra-premium patio door. You'll also enjoy the smooth and reliable operation, as well as an expanded outdoor view.

1. **Premium vinyl mainframe and sash extrusions** are colored throughout – won't chip, peel, crack or warp and never need to be painted.
2. **Mainframe and sash** feature a double-wall design and multi-chambered construction for outstanding strength and thermal protection.
3. **Dual internal/external weatherstripping** on the sash enhances energy efficiency and performance.
4. **Ample 5" rails** with mitered and fusion-welded joints provide traditional beauty as well as added strength and durability.
5. **1" thick (nominal) insulated glass unit** with the Intercept Warm-Edge Spacer System promotes energy conservation year-round.
6. **Steel reinforcements** at the interlocks and lock rails increase strength, rigidity and structural integrity.
7. **Contoured glazing bead** adds visual interest and beauty.
8. **Precision-engineered tandem roller system** ensures quiet and easy operation of the door panel.
9. **Fusion-welded mainframe** provides increased durability and strength.

PLUS THESE ADDITIONAL FEATURES:

- Deep interlocks with a protective bulb weatherstrip deliver increased insulation and a tight seal.
- Mainframe includes interior and exterior accessory grooves for installation and design versatility.
- Multi-point locking system with strong steel bolt design seals the door tightly closed and helps prevent energy loss.
- Interlock incorporates a built-in, anti-lift feature to impede door panel removal when closed or locked.
- Deep anodize finished aluminum roller track helps eliminate the possibility of unsightly dark residue and wearing typical of aluminum tracks while ensuring easy-glide operation.
- Heavy-duty extruded aluminum screen features four adjustable rollers for smooth gliding.
- Available in a 2-panel style in 5', 6' and 8' widths; 3-panel styles in 9' and 12' widths; and a 4-panel style in a 12' width with center panels that open to each side.
- Choose a left or right moving panel – left moving panel is standard (outside looking in); not field reversible.
- Backed by a Lifetime Limited Warranty.[¥]

PATIO DOOR OPTIONS:

- ENERGY STAR-certified ClimaTech insulated glass packages.
- Tandem rollers available with stainless steel housing and bearings for harsh environments.
- Integrated mini blinds² on select patio doors offer convenient sunlight and privacy control.
- Interior ventilation foot lock allows convenient yet limited opening of the door for airflow.
- Keyed exterior lock offers convenient access from outside the home.
- Decorative grids for enhanced beauty.

²Optional integrated mini blinds will feature a white blind only.



Available with the following frame options:

- Stucco fin
- 1³/₈" brickmould¹
- 2" brickmould¹
- Nail fin¹

¹Nail fin option is not factory-applied.

Classic-Style Patio Door Glass Performance Comparison³

	U-Factor	SHGC
Clear	0.41	0.49
ClimaTech	0.27	0.27
ClimaTech Elite Plus	0.25	0.18
ClimaTech SF ThermD	0.23	0.26
ClimaTech SF Elite ThermD	0.22	0.18
ClimaTech TG2	0.21	0.23
ClimaTech PriME ThermD S6	0.19	0.18

³6506 whole door values, double strength glass.

Glass Package Terminology:

Clear Insulated: Clear double-pane insulated glass unit.

ClimaTech: Double-pane unit with one pane of Low-E glass, argon gas and metal alloy Intercept spacer.

ClimaTech Elite Plus: Double-pane unit with one pane of SHGC Low-E glass, argon gas and foam spacer.

ClimaTech SF ThermD: Double-pane unit with two surfaces of Low-E glass (surfaces 2 and 4), argon gas and Stainless Steel Intercept Warm-Edge Spacer System.

ClimaTech SF Elite ThermD: Double-pane unit with one surface of SHGC Low-E glass (surface 2), one surface of Low-E glass (surface 4), argon gas and Stainless Steel Intercept Warm-Edge Spacer System.

ClimaTech TG2: Triple-pane unit with two surfaces of Low-E glass, two air spaces of argon gas and Intercept Warm-Edge Spacer System.

ClimaTech PriME ThermD S6: Triple-pane unit with three surfaces of Low-E glass (surfaces 2, 4 and 6), two air spaces of argon gas and Stainless Steel Intercept Warm-Edge Spacer System.

FRENCH-STYLE SLIDING PATIO DOOR

Traditional French-style doors are a popular choice but require a considerable amount of space to operate. Our Promenade French-Style Sliding Patio Door captures the same authentic “French door” elegance but in a floor space-saving design.



AUTHENTIC FRENCH DOOR CHARACTER AND CHARM

With a 5" top rail, 7" bottom rail and 3" side rails, this eye-catching patio door imparts true French-door character but with the convenience of a sliding door. Ultra-efficient insulating glass and a weathertight design further enhance its outstanding construction.

1. **Premium vinyl mainframe and sash extrusions** are colored throughout – won't chip, peel, crack or warp and never need to be painted.
2. **Mainframe and sash** feature a double-wall design and multi-chambered construction for outstanding strength and thermal protection.
3. **Dual internal/external weatherstripping** on the sash enhances energy efficiency and performance.
4. **5" top rail, 7" bottom rail and 3" side rails** feature mortised joints for added strength and authentic "French door" charm.
5. **1" thick (nominal) insulated glass unit** with the Intercept Warm-Edge Spacer System promotes energy conservation year-round.
6. **Steel reinforcements** at the interlocks and lock rails increase strength, rigidity and structural integrity.
7. **Contoured glazing bead** adds visual interest and beauty.
8. **Precision-engineered tandem roller system** ensures quiet and easy operation of the door panel.
9. **Fusion-welded mainframe** provides increased durability and strength.

PLUS THESE ADDITIONAL FEATURES:

- Deep interlocks with a protective bulb weatherstrip deliver increased insulation and a tight seal.
- Mainframe includes interior and exterior accessory grooves for installation and design versatility.
- Multi-point locking system with strong steel bolt design seals the door tightly closed and helps prevent energy loss.
- Interlock incorporates a built-in, anti-lift feature to impede door panel removal when closed or locked.
- Deep anodize finished aluminum roller track helps eliminate the possibility of unsightly dark residue and wearing typical of aluminum tracks while ensuring easy-glide operation.
- Heavy-duty extruded aluminum screen features four adjustable rollers for smooth gliding.
- Available in a 2-panel style in 5', 6' and 8' widths; 3-panel styles in 9' and 12' widths; and a 4-panel style in a 12' width with center panels that open to each side.
- Choose a left or right moving panel – left moving panel is standard (outside looking in); not field reversible.
- Backed by a Lifetime Limited Warranty.[¥]

PATIO DOOR OPTIONS:

- ENERGY STAR-certified ClimaTech insulated glass packages.
- Tandem rollers available with stainless steel housing and bearings for harsh environments.
- Integrated mini blinds² on select patio doors offer convenient sunlight and privacy control.
- Interior ventilation foot lock allows convenient yet limited opening of the door for airflow.
- Keyed exterior lock offers convenient access from outside the home.
- Decorative grids for enhanced beauty.

²Optional integrated mini blinds will feature a white blind only.



Available with the following frame options:

- Stucco fin
- 1³/₈" brickmould¹
- 2" brickmould¹
- Nail fin¹

¹Nail fin option is not factory-applied.

French-Style Patio Door Glass Performance Comparison³

	U-Factor	SHGC
Clear	0.42	0.52
ClimaTech	0.27	0.28
ClimaTech Elite Plus	0.26	0.19
ClimaTech SF ThermD	0.23	0.27
ClimaTech SF Elite ThermD	0.22	0.18
ClimaTech TG2	0.21	0.24
ClimaTech PriME ThermD S6	0.19	0.22

³6506 whole door values, double strength glass.

Glass Package Terminology:

Clear Insulated: Clear double-pane insulated glass unit.

ClimaTech: Double-pane unit with one pane of Low-E glass, argon gas and metal alloy Intercept spacer.

ClimaTech Elite Plus: Double-pane unit with one pane of SHGC Low-E glass, argon gas and foam spacer.

ClimaTech SF ThermD: Double-pane unit with two surfaces of Low-E glass (surfaces 2 and 4), argon gas and Stainless Steel Intercept Warm-Edge Spacer System.

ClimaTech SF Elite ThermD: Double-pane unit with one surface of SHGC Low-E glass (surface 2), one surface of Low-E glass (surface 4), argon gas and Stainless Steel Intercept Warm-Edge Spacer System.

ClimaTech TG2: Triple-pane unit with two surfaces of Low-E glass, two air spaces of argon gas and Intercept Warm-Edge Spacer System.

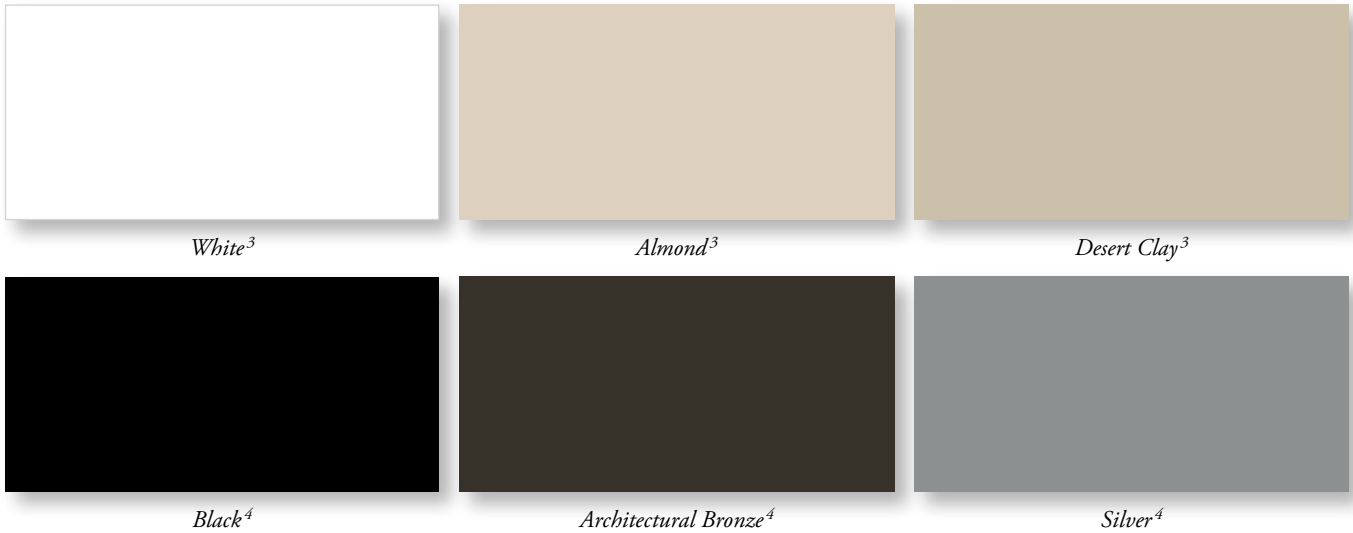
ClimaTech PriME ThermD S6: Triple-pane unit with three surfaces of Low-E glass (surfaces 2, 4 and 6), two air spaces of argon gas and Stainless Steel Intercept Warm-Edge Spacer System.

FRAME FINISHES AND HANDLES

The beautiful appearance of your Promenade Sliding Patio Door is further refined with the perfect combination of frame finish color and handle accent.

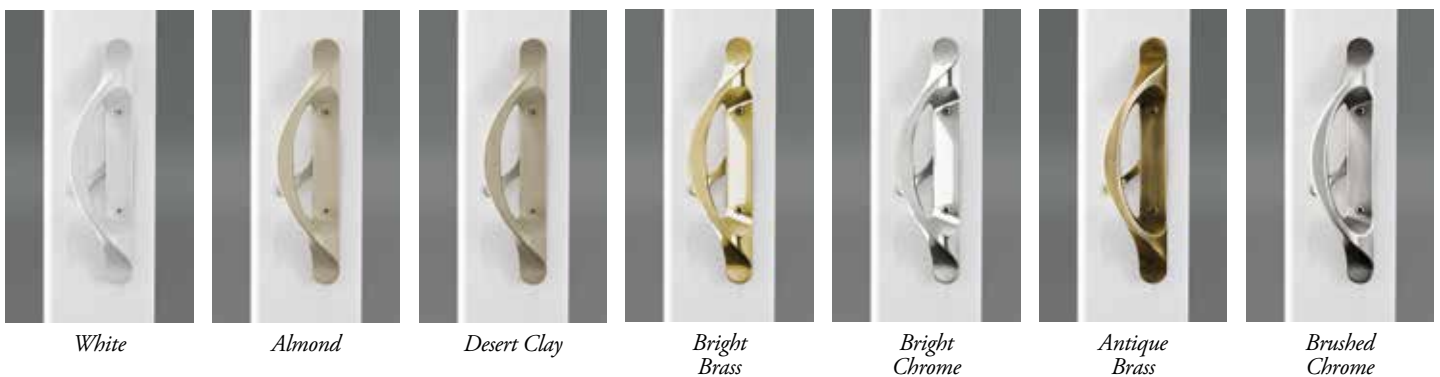
COLOR COLLECTION

Our carefully selected color palette lets you create the ideal patio door – one that beautifully complements the architectural style of your home as well as the interior décor.



ELEGANT HANDLE STYLES

Our Contemporary-Style and Classic-Style Sliding Patio Doors feature a popular handle design with a thumb latch for universal appeal.



The gracefully contoured handle on our French-Style Sliding Patio Door includes a top lock for added resistance.



³Solid extruded color. Note: Desert Clay is not available with exterior color finishes.

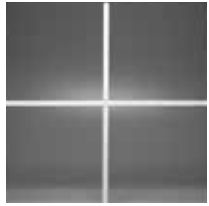
⁴Available with a White or Almond interior only.

DECORATIVE GRIDS

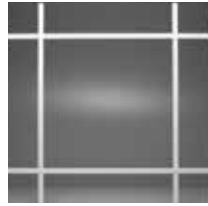
Elevate the elegance of your patio door with the dimensional detailing and distinctive silhouette of a classic grid pattern. Choose from a standard "flat" grid or contoured grid profile.

INTERIOR GRIDS

It's simple to turn your patio door into a statement of style with our decorative interior grids. All grids are enclosed within the insulated glass unit for easy cleaning.



*5/8" Standard
Colonial*



*5/8" Standard
Prairie*



*3/4" Contoured
Colonial*



*3/4" Contoured
Prairie*



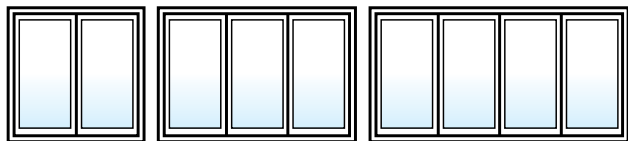
*1" Contoured
Colonial*



*1" Contoured
Prairie*



CONFIGURATIONS



Promenade Sliding Patio Doors are available in 2-, 3- and 4-panel configurations.

WINDOW PRODUCTS FOR ALL YOUR NEEDS

A Full Selection of Styles and Sizes



Single-Hung Windows



Double-Hung Windows



Sliding Windows



Awning Windows



Casement Windows



Picture Windows

For a variety of looks from traditional to contemporary, no matter what the application is, Alside Window Systems has you covered. Choose from a complete product line that offers Single-Hung, Double-Hung, Sliding, Casement, Awning, Picture and Specialty Shape Windows. You'll find that the combination of many styles and configurations will work well to enhance your home's appearance.



Alside 3773 State Road Cuyahoga Falls, Ohio 44223
1-800-922-6009 www.alside.com

EXPERIENCE YOU CAN TRUST

When you buy a Promenade Sliding Patio Door, you know you're getting more than just a frame, sashes and glass. You're getting the knowledge and technical skill of Alside's Product Development Group – experts with a proven track record of designing, building and testing superior, energy-efficient patio doors and windows. These specialists know that to build the best products, you have to start with the best materials and components. Their experience is your assurance of total satisfaction.

LIFETIME LIMITED WARRANTY



Promenade Sliding Patio Doors are made by Alside, a recognized leader in product innovation, manufacturing excellence and uncompromising quality control. That's a reputation you can count on, from the day your patio door is installed until the day you sell your home. And to make your buying decision easier, Alside backs all Promenade Sliding Patio Doors with its Lifetime Limited Warranty.[‡]



For a complete list of air, water and structural performance results, as well as specific code approvals, visit www.alsidewindows.net.



Alside offers a variety of ENERGY STAR-certified products. Consult your window professional for energy-efficient glass packages available for your home and climate zone.

©2024 Alside. Trademarks mentioned in this document are the property of Alside, its affiliates, or their respective owners. ENERGY STAR name and logo are registered U.S. marks and are owned by the U.S. government. [‡]See your Alside Sales Representative for additional information regarding any questions you might have, or any assertions herein, concerning energy efficiency or savings. Energy savings will vary. Energy savings assume proper installation and use. Not all products are ENERGY STAR-certified. ^{††}Insulated glass (IG) units that require capillary tubes may experience some argon gas depletion. [†]For a copy of the written product warranty please visit www.alside.com/support/warranties/ or contact your Alside Sales Representative. Limited warranty does not apply to damage caused by faulty or improper installation, or causes outside of Alside's control. Note: Prairie and Perimeter grid patterns with an unsupported grid span of 40" or greater are subject to a short stabilizer grid to maintain grid integrity. WARNING: Screen will not stop child from falling out the patio door. Keep child away from open patio door. The only purpose of the screen is to reduce the infiltration of insects. Colors may be slightly different from their appearance in this brochure. Make final color selections using actual product samples. All specifications and designs subject to change without notice. Printed in USA 03/24 Digital 75-2539-01

